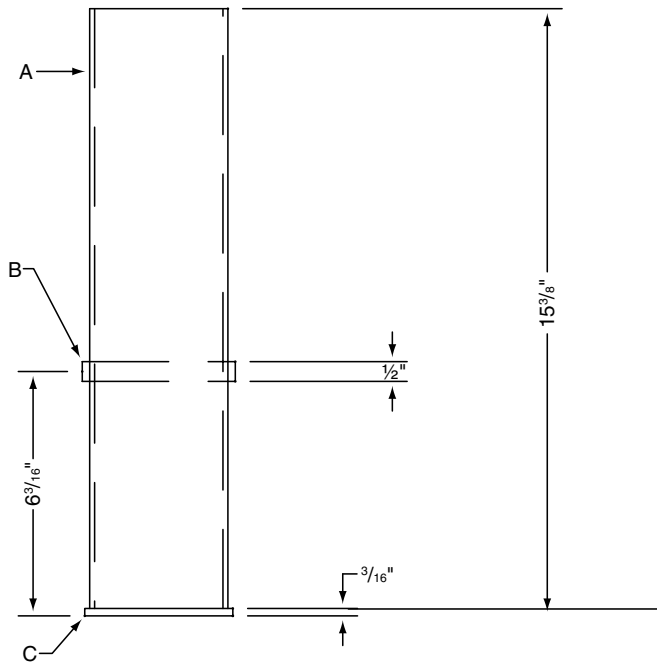
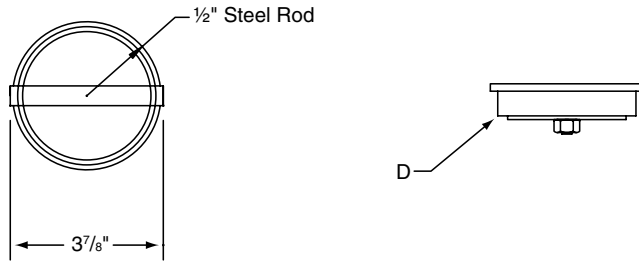


505309

Outdoor Ground Sleeve with Neoprene Seal Cap

by **DRAPER**



- A Tube STL. 3 3/4" O.D. x 3.56" I.D. 15 3/16"
- B Bar Round - 1/2" H.R (1 pcs.)
- C Washer 4" O.D. x 3/16" THICK (1 pcs.)
- D Cap Neoprene Seal 3 1/2" (4 pcs.)

Specifications—505309

3 1/2" x 9" Outdoor Ground Sleeve with Neoprene Seal Cap

____ 3 1/2" x 9" Ground Sleeve with Neoprene Seal Cap, #505309 by Draper, Inc. of Spiceland, IN.

Outdoor ground sleeve shall be constructed with 3 3/4" OD tubing with an inside diameter of 3.56". Ground sleeve shall have an overall length of 15 3/8" and shall have 1/2" diameter limit pin, creating a 6" debris trap at the bottom of the sleeve. Sleeve is finished with black powder coat. Cap shall be provided with a neoprene seal cap that when properly tightened with a 7/32 allen wrench (not included) makes sleeve virtually watertight.

#505309 Outdoor Ground Sleeve designed for use with Draper #505501 Championship Outdoor Aluminum Volleyball System or any other 3 1/2" OD outdoor game standard requiring an sleeve with an inside depth of 9".

Installation Instructions:

- ① Dig hole a minimum of 18" in diameter and approximately 24" deep. Larger footing size may be required if soil conditions are soft or loose.
- ② Mix a sufficient amount of 3000 psi concrete (supplied by others) to completely fill hole. Fill hole to just below ground level making sure the concrete settles and fills all voids.
- ③ Submerge the sleeve with the open end facing upward in the wet concrete. The sleeve should be installed plumb and level with the stop pin exactly 9" below the playing surface. Sleeve should never extend above the playing surface. Be sure to not allow concrete to get inside sleeve or you may be unable to install the standard.
- ④ Allow concrete to properly cure per package instructions prior to installation of the standard.

DRAPER

411 S. Pearl St., Spiceland, IN 47385 USA ■ 765-987-7999 ■ fax 765-987-7142

www.draperinc.com

Copyright © 2006 Draper Inc. Form VB-505309_Sub-Inst06 Printed in U.S.A.

PROJECT: _____

ARCHITECT: _____

CONTRACTOR: _____

SUPPLIER: _____

DATE: _____ REVISED: _____